



LED LIGHTING

April 2011 Edition

Table of Contents

LED-GLPACK Glasspack	4
LED-MWP Medium Wallpack	5
LED-LWP Large Wallpack	6
LED-SACCORD Small Accord Wallpack	7
LED-LACCORD Large Accord Wallpack	8
LED-MSCOWP Medium Semi-Cutoff Wallpack	9
LED-MWPCO & LWPCO Constellation Wallpacks	10
LED-BRAVO Bravo! Wallpack	11
LED-C2WP Crescent II Up/Down Wall Sconce	12
LED-HMWP-DO Halfmoon Down Light Wallpack	13
LED-HMWP-UD Halfmoon Up/Down Light Wallpack	14
LED-WLUDWP & WLDWP Wallite Wall Cylinders	15
LED-OVWP Ovation Wallpack Series	16
LED-SLWP Slimline Wallpack	17
LED-DSFL Deluxe Small Flood	18
LED-MFL Mid-Size Flood	19
LED-12FL Deluxe 12" Flood	20
LED-RBF Round Back Flood	21
LED-HFL Horizontal Flood	22
LED-LFL 16" Large Area/Flood	23
LED-22FL 22" Extra Large Area/Flood	24
LED-SAL Small Adjustable Area Light	25
LED-LAL Large Adjustable Area Light	26
LED_DCOBRA Deluxe Cobra Head	27
LED-DTRB Dome Top Round Bollards	28
LED-FTRB Flat Top Round Bollards	29
LED-SB Square Bollards	30
LED-9X9 9"x 9" Small Ceiling Canopy	31
LED-12X12 12"x12" Medium Ceiling Canopy	32
LED-DGARAGE Deluxe Garage Lighter	33
LED-GARAGE Vandal Resistant Garage Lighter	34

Duraguard is pleased to announce we are now offering a wide assortment of our fixtures with the Xicato LED module. These spec quality modules feature perfect color, rugged reliability, and compact high flux.

Color Specification: Xicato uses a 1x2 MacAdam Ellipse to specify color, rather than the ANSI NEMA spec that allows up to nine steps for each color temperature. This allows color consistency from module to module and throughout its lifespan.

Color Temps: 2700K, 3000K, and 4000K for job-specific tailoring.

CRI of 80+: Excellent color rendition.

Uniform Beam: Intensity and color temperature are consistent, so there are no yellow rings or color shadows produced.

Long Life: Up to 50,000 hours.

High Lumen Maintenance: Exceeds DoE requirements for lumen maintenance.

Energy Savings: In addition to the overall less consumption of energy, these modules offer a choice of drivers; 350mA for maximum efficacy, or up to 700mA for maximum light output.

Optional Optics: Modules can be customized with 20, 40, and 60 degree reflectors on select models, or used without for a wider beam spread.

Universal Operating Position: Allows fixture placement in any direction needed with no loss of light output as in conventional HID.

Dimmable: Dimming capability for light harvesting and further energy savings (Analog or Digital).

IP66 Module Rating: Fully enclosed LED construction allows individual modules to achieve an IP66 rating.

To Order Call: 1-800-736-7991

LED Glasspack #LED-GLPACK

Ideal for use in residential areas, convenience stores, apartment buildings, and for security lighting.

Features:

Diecast aluminum housing with powdercoat finish over a chromate conversion coating for durability.

White aluminum reflector and high impact heat resistant borosilicate glass lens for optimum light distribution.

Optional 20, 40, and 60 degree optics available.

Weatherproof silicone gasket provides moisture and dust proof protection.

CSA listed for wet locations.

Wattage: 1x7.5w or 1x15w LED.



LED Medium Wallpack #LED-MWP

Ideal for use in warehouse facilities, shipping & receiving areas, industrial plants, and commercial buildings.

Features:

Diecast aluminum housing and hinged front frame with powdercoat finish over a chromate conversion coating for durability.

White aluminum reflector and high impact heat resistant borosilicate glass lens for optimal light distribution.

Optional 20, 40, and 60 degree optics available.

Weatherproof silicone gasket provides moisture and dust proof protection.

CSA listed for wet locations.

Wattage: 1x7.5w, 1x15w, 2x7.5w, or 2x15w LED.



To Order Call: 1-800-736-7991

LED Large Wallpack #LED-LWP

Ideal for use in warehouse facilities, shipping & receiving areas, industrial plants, and commercial buildings.

Features:

Diecast aluminum housing and hinged front frame with powdercoat finish over a chromate conversion coating for durability.

White aluminum reflector and high impact heat resistant prismatic borosilicate glass lens for optimal light distribution.

Optional 20, 40, and 60 degree optics available.

Weatherproof silicone gasket provides moisture and dust proof protection.

CSA listed for wet locations.

Wattage: 2x7.5w, 2x15w, 3x7.5w, or 3x15w LED.



LED Small Accord Semi-Cutoff Wallpack

#LED-SACCORD

Ideal for use in warehouse facilities, shipping & receiving areas, industrial plants, and commercial buildings.

Features:

Diecast aluminum housing and hinged front frame with powdercoat finish over a chromate conversion coating for durability.

Includes stainless steel hinge pins and safety cable to prevent front frame impact.

White aluminum reflector and high impact heat resistant prismatic borosilicate glass lens for optimal light distribution.

Optional 20, 40, and 60 degree optics available.

Weatherproof silicone gasket provides moisture and dust proof protection.

CSA listed for wet locations.

Wattage: 1x7.5w, 1x15w, 2x7.5w, or 2x15w LED.



To Order Call: 1-800-736-7991

LED Large Accord Semi-Cutoff Wallpack - WPA25L

Ideal for use in warehouse facilities, shipping & receiving areas, industrial plants, and commercial buildings.

Features:

Diecast aluminum housing and hinged front frame with powdercoat finish over a chromate conversion coating for durability.

Includes stainless steel hinge pins and safety cable to prevent front frame impact.

White aluminum reflector and high impact heat resistant prismatic borosilicate glass lens for optimal light distribution.

Optional 20, 40, and 60 degree optics available.

Weatherproof silicone gasket provides moisture and dust proof protection.

CSA listed for wet locations.

Wattage: 3x15w LED.



LED Medium Hooded Semi-Cutoff Wallpack

#LED-MSCOWP

Ideal for use in warehouse facilities, shipping & receiving areas, industrial plants, and commercial buildings.

Features:

Diecast aluminum housing and hinged front frame with powdercoat finish over a chromate conversion coating for durability.

White aluminum reflector and tempered clear glass lens.

Optional 20, 40, and 60 degree optics available.

CSA listed for wet locations.

Wattage: 1x7.5w, 1x15w, 2x7.5w, or 2x15w LED.



To Order Call: 1-800-736-7991

LED Medium Constellation Wallpack #LED-MWPCO
LED Large Constellation Wallpack #LED-LWPCO

Ideal for use in warehouse facilities, shipping & receiving areas, industrial plants, and commercial buildings.

Features:

Diecast aluminum housing and hinged full cutoff front frame with powdercoat finish over a chromate conversion coating for durability.

White aluminum reflector and high impact heat resistant tempered flat glass lens for optimal light distribution.

Optional 20, 40, and 60 degree optics available.

Weatherproof silicone gasket provides moisture and dust proof protection.

Meets Dark Sky requirements.

CSA listed for wet locations.

MWPCO: 1x7.5w, 1x15w, 2x7.5w, or 2x15w LED.

LWPCO: 2x7.5w, 2x15w, 3x7.5w, or 3x15w LED.



LED Bravo! Wallpack #LED-BRAVO

Ideal for use in entryways, egress doors, schools, office complexes, malls, and industrial complexes.

Features:

Diecast aluminum back housing with powdercoat finish over a chromate conversion coating for durability. Color matched hinged polycarbonate front housing with clear ribbed lens area.

White aluminum reflector and clear ribbed polycarbonate lens area in front housing.

Cast-in template for mounting over an electrical box.

CSA listed for wet locations.

Wattage: 1x7.5w, 1x15w, 2x7.5w, and 2x15w LED.



To Order Call: 1-800-736-7991

LED Crescent II Up/Down Wall Sconce #LED-C2WP

Ideal for use in warehouse facilities, shipping & receiving areas, industrial plants, and commercial buildings.

Features:

Diecast aluminum housing with powdercoat finish over a chromate conversion coating for durability.

White aluminum reflector and clear tempered glass lenses.

Weatherproof silicone gasket provides moisture and dust proof protection.

Included Easy-Hang “two hands free” wall mounting bracket.

CSA listed for wet locations.

Wattage: 4x7.5w LED.



LED Halfmoon Down Light Wallpack #LED-HMWP-DO

Ideal for use in warehouse facilities, shipping & receiving areas, industrial plants, and commercial buildings.

Features:

Diecast aluminum housing with powdercoat finish over a chromate conversion coating for durability.

White aluminum reflector and high impact heat resistant tempered flat glass lens for optimal light distribution.

Weatherproof silicone gasket provides moisture and dust proof protection.

Included Easy-Hang “two hands free” wall mounting bracket.

CSA listed for wet locations.

Wattage: 2x7.5w, 2x15w, 3x7.5w, or 3x15w LED.



To Order Call: 1-800-736-7991

LED Halfmoon Up/Down Light Wallpack

#LED-HMWP-UD

Ideal for use in warehouse facilities, shipping & receiving areas, industrial plants, and commercial buildings.

Features:

Diecast aluminum housing with powdercoat finish over a chromate conversion coating for durability.

White aluminum reflectors and high impact heat resistant tempered flat glass lens bottom and molded oval shape upper lenses for optimal light distribution.

Weatherproof silicone gasket provides moisture and dust proof protection.

Included Easy-Hang “two hands free” wall mounting bracket.

CSA listed for wet locations.

Wattage: 2x7.5w, 2x15w, 3x7.5w, 3x15w, 4x7.5w, or 5x7.5w LED.



LED Wallite Wall Cylinder Series

#LED-WLUDWP, LED-WLDWP

Primarily used to accentuate the architecture of the building where it is installed with a wall washing light at night.

Features:

Extruded oval aluminum housing and diecast aluminum ballast housing with powdercoat finish over a chromate conversion coating for durability.

White aluminum reflectors and clear tempered glass lenses.

Included Easy-Hang “two hands free” wall mounting bracket.

Ballast compartment is hinged for easy wiring access.

Optional 20, 40, and 60 degree optics available.

CSA listed for wet locations.

LED-WLUDWP

Wattage: 2x7.5w, 2x15w, 3x7.5w, or 3x15w LED.

Two puck models have one up & one down; three puck models have one up & two down.

LED-WLDWP

Wattage: 1x7.5w, 1x15w, 2x7.5w, or 2x15w LED.



To Order Call: 1-800-736-7991

LED Ovation Wallpack Series #LED-OVWP

Ideal for use in warehouse facilities, shipping & receiving areas, industrial plants, commercial buildings, and parking garages.

Features:

Diecast aluminum housing and top frame with powdercoat finish over a chromate conversion coating for durability.

Top frame available in Open, Half-Cutoff, or Grid styles.

Includes white aluminum reflector and prismatic borosilicate glass lens in your choice of Clear or Frost.

Optional 20, 40, and 60 degree optics available.

CSA listed for wet locations.

Wattage: 1x15w, 2x7.5w, 2x15w, 3x7.5w or 3x15w LED.



LED Slimline Wallpack #LED-SLWP

Ideal for use in warehouse facilities, shipping & receiving areas, industrial plants, and commercial buildings.

Features:

Diecast housing and hinged front frame with powdercoat finish over a chromate conversion coating for durability.

White aluminum reflector and high impact heat resistant molded prismatic borosilicate glass lens for optimum light distribution.

Optional 20, 40, and 60 degree optics available.

Weatherproof silicone gasket provides moisture and dust proof protection.

Includes mounting plate with integral electrical box and built-in level for “two hands free” mounting.

CSA listed for wet locations.

Wattage: 2x7.5w, 2x15w, 3x7.5w, 3x15w, 4x7.5w, or 4x15w LED.



To Order Call: 1-800-736-7991

LED Deluxe Small Flood #LED-DSFL

Ideal for lighting facades, displays & signs, and general security lighting.

Features:

Diecast aluminum housing and hinged lens frame with powdercoat finish over a chromate conversion coating for durability.

Includes white aluminum reflector and tempered flat glass lens.

Optional 20, 40, and 60 degree optics available.

Equipped with adjustable knuckle for directional stability.

CSA listed for wet locations.

Wattage: 1x7.5w or 2x7.5w LED.



LED Mid-size Flood #LED-MSF

Ideal for lighting large broad area on facades, displays & signs, and general security lighting.

Features:

Diecast aluminum housing and hinged top frame with powdercoat finish over a chromate conversion coating for durability.

Includes white aluminum reflector and tempered flat glass lens.

Equipped with adjustable knuckle or adjustable slipfitter for directional stability.

CSA listed for wet locations.

Wattage: 1x7.5w, 1x15w, 2x7.5w, or 2x15w LED.



To Order Call: 1-800-736-7991

LED Deluxe 12" Flood #LED-12FL

Ideal for use in residential areas, convenience stores, apartment buildings, and for security lighting.

Features:

Diecast aluminum housing and hinged top frame with powdercoat finish over a chromate conversion coating for durability.

Includes white aluminum reflector and tempered flat glass lens.

Available with an adjustable slipfitter, two-piece swivel bracket, or extruded arms mounting options.

CSA listed for wet locations.

Wattage: 2x15w or 3x15w LED.



LED Round Back Flood #LED-RBF

Ideal for landscape lighting, architectural applications, building facades, and general security lighting.

Features:

Diecast aluminum housing and hinged top frame with powdercoat finish over a chromate conversion coating for durability.

Includes white aluminum reflector and tempered flat glass lens.

Equipped with adjustable knuckle or equipped with adjustable slipfitter for directional stability.

CSA listed for wet locations.

Wattage: 1x7.5w, 1x15w, 2x7.5w, 2x15w, or 3x7.5w LED.



To Order Call: 1-800-736-7991

LED Horizontal Flood #LED-HFL

Ideal for lighting facades, flags, signs & displays, and general security lighting.

Features:

Diecast aluminum housing and hinged front frame with powdercoat finish over a chromate conversion coating for durability.

Includes white aluminum reflector and tempered flat glass lens.

Optional 20, 40, and 60 degree optics available.

Available with an adjustable slipfitter, two-piece swivel bracket, or extruded arms mounting options.

CSA listed for wet locations.

Wattage: 1x7.5w, 1x15w, 2x7.5w, 2x15w, 3x7.5w, or 3x15w LED.



LED Large Area/Flood #LED-LFL

Ideal for use in residential areas, convenience stores, apartment buildings, and for security lighting.

Features:

Diecast aluminum housing and hinged front frame with powdercoat finish over a chromate conversion coating for durability.

Includes white aluminum reflector and tempered flat glass lens.

Optional 20, 40, and 60 degree optics available.

Available with an adjustable slipfitter, two-piece swivel bracket, or extruded arms mounting options.

CSA listed for wet locations.

Wattage: 4x15w or 5x15w LED.



To Order Call: 1-800-736-7991

LED 22" Extra Large Area/Flood #22FL

Ideal for use in residential areas, convenience stores, apartment buildings, and for security lighting.

Features:

Diecast aluminum housing and hinged front frame with powdercoat finish over a chromate conversion coating for durability.

Includes white aluminum reflector and tempered flat glass lens.

Optional 20, 40, and 60 degree optics available.

Available with an adjustable slipfitter, two-piece swivel bracket, or extruded arms mounting options.

CSA listed for wet locations.

Wattage: 8x15w or 10x15w LED.



LED Small Adjustable Area Light #LED-SAL

Ideal for use in auto dealerships, parking lots, retail malls, shopping centers, commercial & industrial complexes, walkways, driveways, and parkways.

Features:

Diecast aluminum housing, front frame and ballast box with powdercoat finish over a chromate conversion coating for durability.

White aluminum reflector and tempered glass lens.

Optional 20, 40, and 60 degree optics available.

Housing swivels from 0 to 30 degrees and includes angle indicators at adjustment points.

Included Easy-Hang “two hands free” wall mounting bracket.

CSA listed for wet locations.

Wattage: 2x15w LED.



To Order Call: 1-800-736-7991

LED Large Adjustable Area Light LED-LAL

Ideal for use in auto dealerships, parking lots, retail malls, shopping centers, commercial & industrial complexes, walkways, driveways, and parkways.

Features:

Diecast aluminum housing, front frame and ballast box with powdercoat finish over a chromate conversion coating for durability.

White aluminum reflector and tempered glass lens.

Optional 20, 40, and 60 degree optics available.

Housing swivels from 0 to 30 degrees and includes angle indicators at adjustment points.

Included Easy-Hang “two hands free” wall mounting bracket.

CSA listed for wet locations.

Wattage: 4x15w LED.



LED Deluxe Cobra Head #LED-DCOBRA

Ideal for use in shipping & receiving areas, industrial plants, commercial buildings, and roadway applications.

Features:

Heavy-duty diecast housing and hinged front frame with stainless steel “no tools needed” clips and smooth gray powdercoat finish over a chromate conversion coating for durability.

White aluminum reflector and molded sag glass lens.

Includes lamp and internal ballast tray and accepts a 2 $\frac{9}{8}$ ” diameter mounting arm.

Optional 20, 40, and 60 degree optics available.

CSA listed for wet locations.

Wattage: 4x15w or 6x15w LED.



To Order Call: 1-800-736-7991

LED Dome Top Round Bollard Series #LED-DTRB

Ideal for use in residential areas, commercial areas, and on walkways & driveways.

Features:

One-piece extruded aluminum body and diecast aluminum domed top with powdercoat finish over a chromate conversion coating for durability.

Available with IES Type III or V glass refractor (DTRB3 or DTRB5), aluminum cone reflector (DTRBPBC), or cast aluminum louvers (DTRBAAL).

Includes clear polycarbonate lens, cast aluminum mounting plate, and 4" anchor bolts.

Bollards can be cut to custom lengths upon request.

CSA listed for wet locations.

Wattage: 2x7.5w, 2x15w, or 3x7.5w LED.



LED Flat Top Round Bollard Series #FTRB

Ideal for use in residential areas, commercial areas, and on walkways & driveways.

Features:

One-piece extruded aluminum body and diecast aluminum flat top with powdercoat finish over a chromate conversion coating for durability.

Available with IES Type III or V glass refractor (FTRB3 or FTRB5), aluminum cone reflector (FTRBPBC), or cast aluminum louvers (FTRBAAL).

Includes clear polycarbonate lens, cast aluminum mounting plate, and 4" anchor bolts.

Bollards can be cut to custom lengths upon request.

CSA listed for wet locations.

Wattage: 2x7.5w, 2x15w, or 3x7.5w LED.



To Order Call: 1-800-736-7991

LED Square Bollard Series #SB

Ideal for use in residential areas, commercial areas, and on walkways & driveways.

Features:

One-piece extruded aluminum body and diecast aluminum flat top with powdercoat finish over a chromate conversion coating for durability.

Available with IES Type III or V glass refractor (SB3 or SB5), aluminum cone reflector (SBPBC), or your choice of round or square cast aluminum louvers (SBRAAL or SBSAAL).

Includes clear polycarbonate lens, cast aluminum mounting plate, and 4" anchor bolts.

Bollards can be cut to custom lengths upon request.

CSA listed for wet locations.

Wattage: 2x7.5w, 2x15w, or 3x7.5w LED.



LED 9"x9" Small Ceiling Canopy #LED-9X9

Ideal for use in residential exteriors, entryways, walkways, stairways & perimeters, parking garages, and wet industrial commercial spaces.

Features:

Diecast aluminum housing with powdercoat finish over a chromate conversion coating for durability.

Includes white aluminum reflector and clear prismatic polycarbonate lens.

Optional 20, 40, and 60 degree optics available.

Silicone gasket eliminates moisture, dust, and insect penetration.

CSA listed for wet locations.

Wattage: 1x7.5w LED.



To Order Call: 1-800-736-7991

LED 12"x12" Medium Ceiling Canopy #LED-12X12

Ideal for use in residential exteriors, entryways, walkways, stairways & perimeters, parking garages, and wet industrial commercial spaces.

Features:

Diecast aluminum housing with powdercoat finish over a chromate conversion coating for durability.

Includes white aluminum reflector and clear prismatic polycarbonate lens.

Optional 20, 40, and 60 degree optics available.

Silicone gasket eliminates moisture, dust, and insect penetration.

CSA listed for wet locations.

Wattage: 2x7.5w, 2x15w, 3x7.5w, or 4x7.5w LED.



LED Deluxe Garage Lighter #LED-DGARAGE

Ideal for use in canopy areas, shopping malls, terminals, public buildings, and convenience stores.

Features:

Heavy duty round diecast aluminum housing with powdercoat finish over a chromate conversion coating for durability.

Includes clear polycarbonate prismatic optical refractor with gasket & hinged drop lens, and two-piece aluminum reflector.

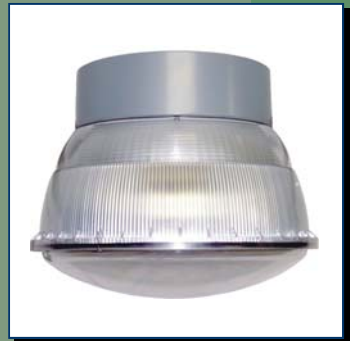
Upper section of reflector can be removed to create an up light component.

Optional 20, 40, and 60 degree optics available.

Sealed optics prevents dust accumulation inside the fixture.

CSA listed for damp locations.

Wattage: 2x75w, 2x15w, 3x7.5w, or 3x15w LED.



To Order Call: 1-800-736-7991

LED Vandal Resistant Garage Lighter #LED-GARAGE

Ideal for use in canopy areas, shopping malls, terminals, public buildings, and convenience stores.

Features:

Round diecast aluminum housing with powdercoat finish over a chromate conversion coating for durability.

Includes white aluminum reflector and extended clear prismatic polycarbonate lens.

Optional 20, 40, and 60 degree optics available.

Sealed optics prevents dust accumulation inside the fixture.

CSA listed for wet locations.

Wattage: 1x7.5w, 1x15w, 2x7.5w, 2x15w, 3x7.5w, 3x15w or 4x7.5w LED.



COMING SOON!

The Made In USA line of fixtures will soon be available in LED! This will include the 5th Avenue, Madison, Broadway, and Kitty Hawk USA models. We will keep you informed of our progress and, of course, we will announce availability as soon as they are ready for purchase!





1304 NE 154th Street, Ste 104
Vancouver, WA 98685
1-800-736-7991
customerservice@duraguard.com